



# GAT MONTHLY MEMBERSHIP PROGRESS REPORT

Results as of: 4/30/2022

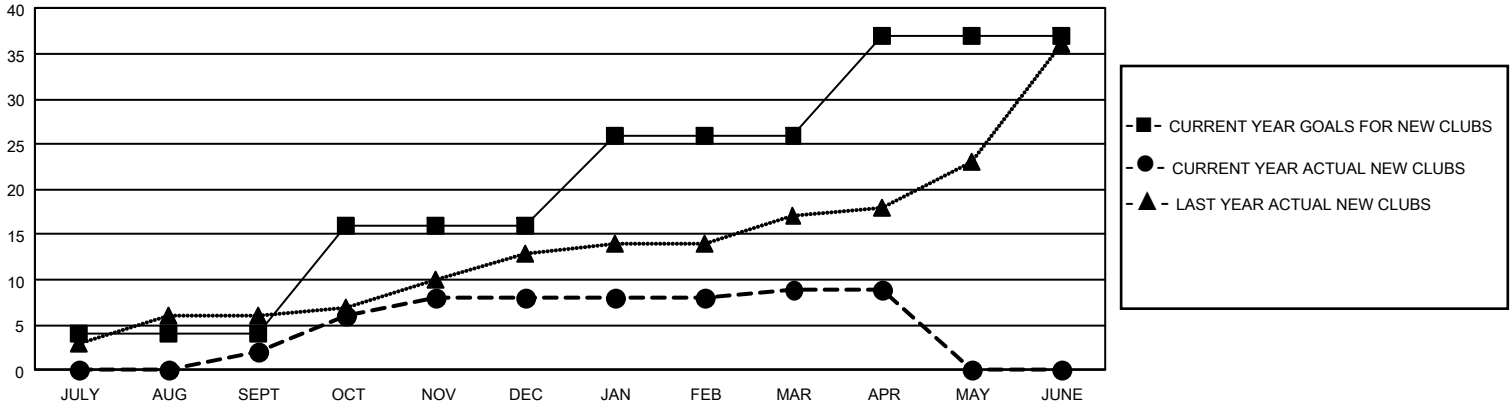
## GAT Constitutional Area 2

REPORT DOES NOT INCLUDE CLUBS IN UNDISTRICTED AREAS.

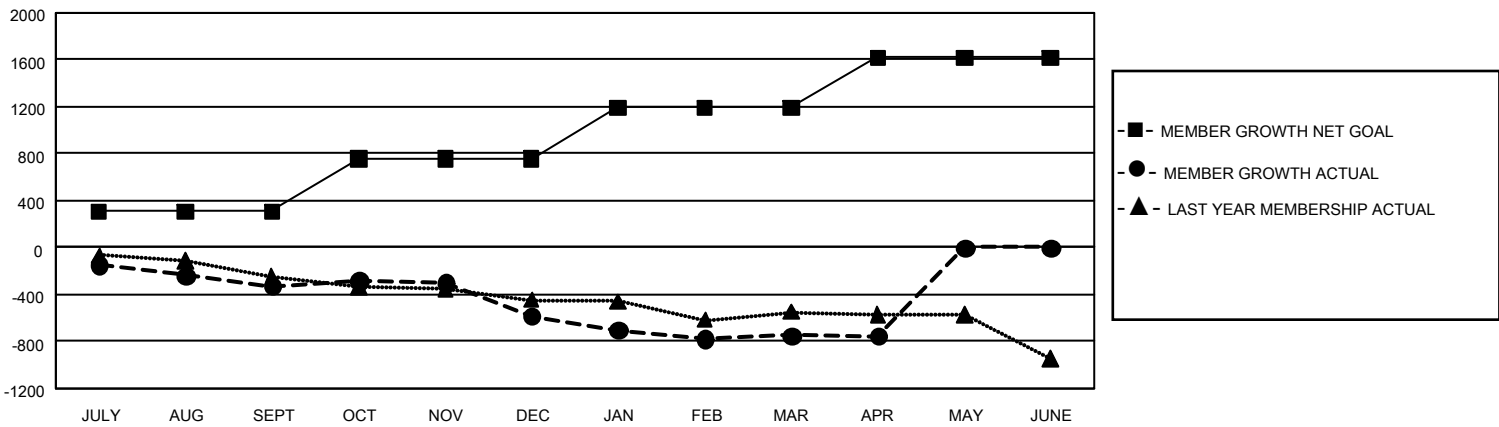
Clubs			
RESULTS FOR 2021-2022			
QUARTER	NEW CLUB GOAL	NEW CLUBS	DROPPED CLUBS
JULY/AUG/SEPT	12	2	9
OCT/NOV/DEC	36	6	13
JAN/FEB/MAR	30	1	9
APR/MAY/JUNE	33	0	0

Members			
RESULTS FOR 2021-2022			
QUARTER	MEMBER GROWTH NET GOAL	MEMBER GROWTH ACTUAL	DROPPED MEMBERS ACTUAL (including transfers)
JULY/AUG/SEPT	306	442	691
OCT/NOV/DEC	450	842	1,018
JAN/FEB/MAR	438	679	743
APR/MAY/JUNE	426	261	248

GOALS AND ACTUAL NEW CLUBS CUMULATIVE



GOALS AND ACTUAL MEMBERS CUMULATIVE



DROPPED CLUBS: 31	
<b>DROPPED MEMBERS</b>	
DECEASED	403
CLUB CANCELLED	191
OTHER	2,107
<b>TOTAL</b>	<b>2,701</b>

578 CLUBS OF 1,286 ADDED 1 OR MORE NEW MEMBERS

[CLICK HERE FOR CUMULATIVE MEMBERSHIP DATA](#)

GENDER DISTRIBUTION	
MALE	18,059 (65.80%)
FEMALE	9,382 (34.19%)
NON BINARY	1 (0.00%)
PREFER NOT TO ANSWER	2 (0.01%)
<b>TOTAL FAMILY UNIT MEMBERS</b>	<b>4,978</b>
<b>FAMILY MEMBERS PAYING HALF DUES</b>	<b>2,554</b>